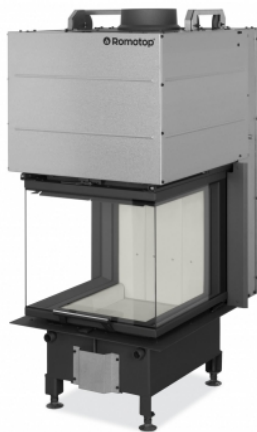


HEAT fireplace inserts WITH THREE-SIDED LIFTING DOOR AND SPLIT GLAZING

The clean right-angle geometry of door glazing is the defining feature of the whole design of HEAT fireplace inserts with three-sided glazing and extending doors. The generous glazing means you can experience the play of living flames to the fullest.

HEAT fireplace inserts have large-format printed three-sided glazing that allows you to experience the fire in a unique way. The easy, silent and precise operation of the lifting door is guaranteed by the state-of-the-art SILENT LIFT system. The combustion chamber is lined with heat-resistant bricks named IGNITON and is designed with no furnace grate. However the insert can be fitted with a grate at the customer's request. HEAT fireplace inserts are intended for convection operation. The innovative DOUBLE SPIN flue gas system increases efficiency and reduces the environmental impact of the fireplace insert. Secondary air intake washes over the glass in the door to prevent the cumulation of deposits. Primary and secondary air intake is regulated by a single control element. An EAI (external air intake) system is included. Tertiary air is brought into the combustion chamber to maximise combustion efficiency. Side and top MAMMOTH accumulation sets can be purchased separately for fireplace inserts, which can extend the period of heat radiation by more than 12 hours.

HEAT U 3G L 50.52.50.24



Prices on request at your seller

Split glazing - order code: **HU3LG 24**

without DOUBLE SPIN system

HEAT U 3G L 50.52.50.24 K1 is version that includes supporting construction (K1 mark). Order code: **HU3LG 24 K1**. Supporting construction cannot be ordered separately!

Technical parameters

Height	1382 mm
Width	582 mm
Depth	749 mm
Door height	468 mm
Door width	502 mm
Door depth	496 mm
Weight	234 kg
Regulated output	4,0-10,4 kW
Smoke flue diameter	200 mm
Flue socket diameter	200 mm
External air intake diameter	150 mm
Axis height of rear outlet	1167 mm
Draught	12 Pa
Efficiency	83,3 %
Average wood consumption	2,3 kg/h
A+	

Accessories

ADJUSTABLE LEGS - 190 mm

AIRBOX 02

CONVECTION COVER (HU3LG KON01)

FRAME HU3LG RAM11 cover standard

FRAME HU3LG RAM12 cover standard

FRAME HU3LG RAM13 standard

FRAME HU3LG RAM14 standard

GRATE SET (H3 ROST 04)

HANDLING SET

SUPPORTING CONSTRUCTION for fireplace insert HEAT U 3G L 50.52.50.24

Download

[Declaration about qualities](#)

[EC declaration of conformity](#)

[Ecodesign \(EU 2015/1185\)](#)

[Energy label and product sheet](#)

[Energy label \(EU 2015/1186\)](#)

[General instructions](#)

[Installation instructions](#)

[Technical documentation](#)

[Technical sheet](#)

[Warranty sheet](#)

[Download our catalogue!](#)